

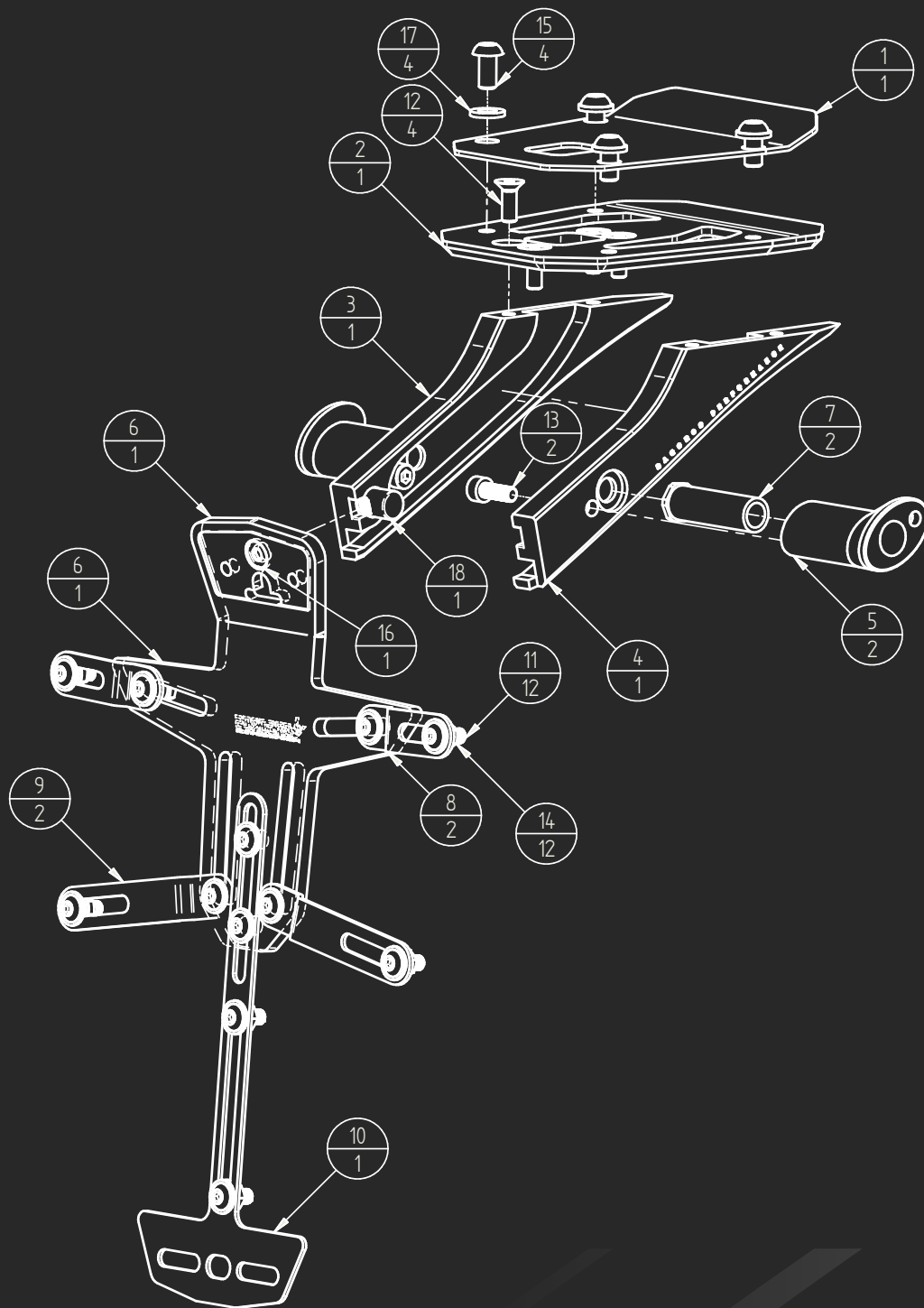


TAIL TIDY

Installation Instructions

KTM 125/250/390 DUKE MODEL YEAR 2024+



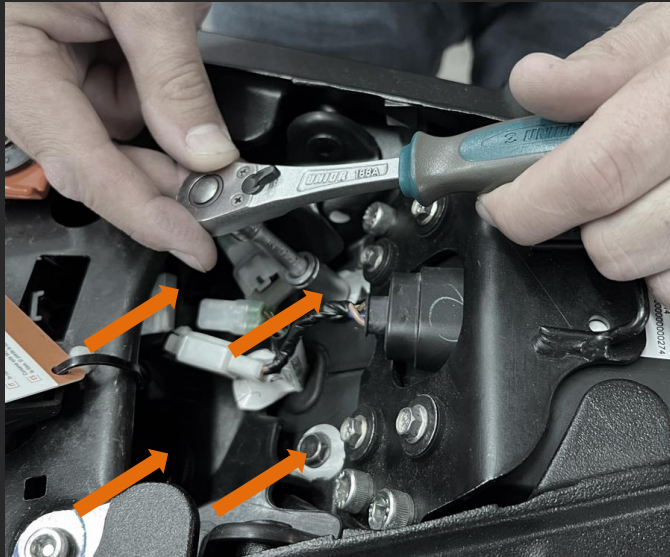


Item Number	Title	Quantity
1	Colour Plate	1
2	Rear end cover	1
3	Body Left	1
4	Body Right	1
5	Blinker Holder	2
6	Plate Holder	1
7	Blinker Nut	2
8	Licence Plate Extension - Short	2
9	Licence Plate Extension - Long	2
10	Reflector holder	1
11	Bolt M5X12 A2 DIN/ ISO7380-2	12
12	Bolt M5X14 A2 DIN7991 ISO10642	4
13	Bolt M5X14 8.8VZ DIN912 ISO4762	2
14	Nut M5 A2 DIN6923 ISO4161	12
15	Bolt M6X12 A2 DIN/ ISO7380-1	4
16	Bolt M6X12 8.8VZ	1
17	Washer A6 A2 DIN125 ISO7089	4
18	Barrel Nut M6 F10x20	1

STEP 1

Remove the rear seat and unplug the tail connector.

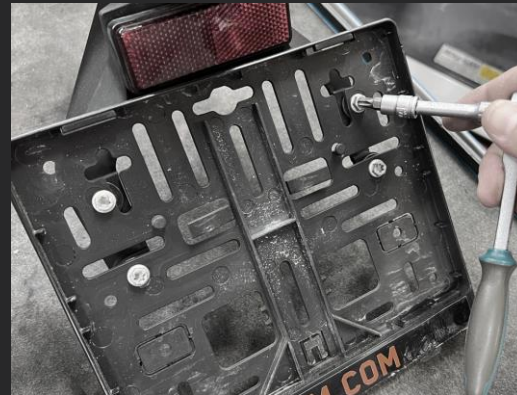
Pull out the two rubber plugs, unscrew the 4 bolts and remove the OEM tail bracket.



IMPORTANT NOTE : To ensure absolute reliability of the assembly, we strongly advise employing an appropriate thread locker. Please apply the adhesive with care, using it sparingly.

STEP 2

Disassemble OEM license plate holder, as shown in the pictures below.



For turn signal nuts, use the supplied KTM spark plug socket wrench. Mark the position of the turn signals (left right) disconnect all connectors and remove the lights.



IMPORTANT NOTE : To ensure absolute reliability of the assembly, we strongly advise employing an appropriate thread locker. Please apply the adhesive with care, using it sparingly.

STEP 3

Next step, assemble the turn signal spacers and licence plate light to the plate holder.

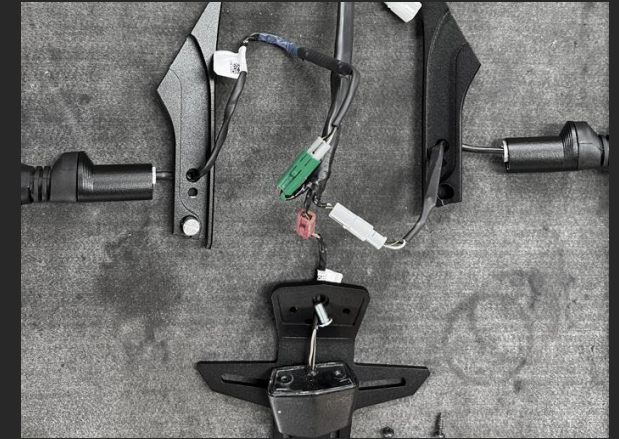
Tighten the turn signal lights nuts, but DO NOT tighten the plate light yet.



IMPORTANT NOTE : To ensure absolute reliability of the assembly, we strongly advise employing an appropriate thread locker. Please apply the adhesive with care, using it sparingly.

STEP 4

In this step, prepare the full assembly for the final joining. Route the cables through the holes and connect the connectors with the KTM extension cable. Insert the barrel nut and screw the spacers with turn signals on the body left and body right. At this point you have to pay attention to the position of the left and right turn signals, otherwise you will have to start from the beginning.



Now everything is ready for the final connection, carefully fold all the cables into the case and close the assembly. At the end, fasten the low head bolt through the plate holder and you are almost there !



STEP 5

Now some final touches left...

Route the cables trough the rear end cover and the coulor plate, tighten the 4 bolts to the asebmly.

At this point you are ready to mount the tail tidy on the bike. You can use the black OEM bolts for the mounting, it is a good idea to use a drop of thread locker on the threads.

Connect the wiring and you are good to go !



IMPORTANT NOTE : To ensure absolute reliability of the assembly, we strongly advise employing an appropriate thread locker. Please apply the adhesive with care, using it sparingly.

STEP 6

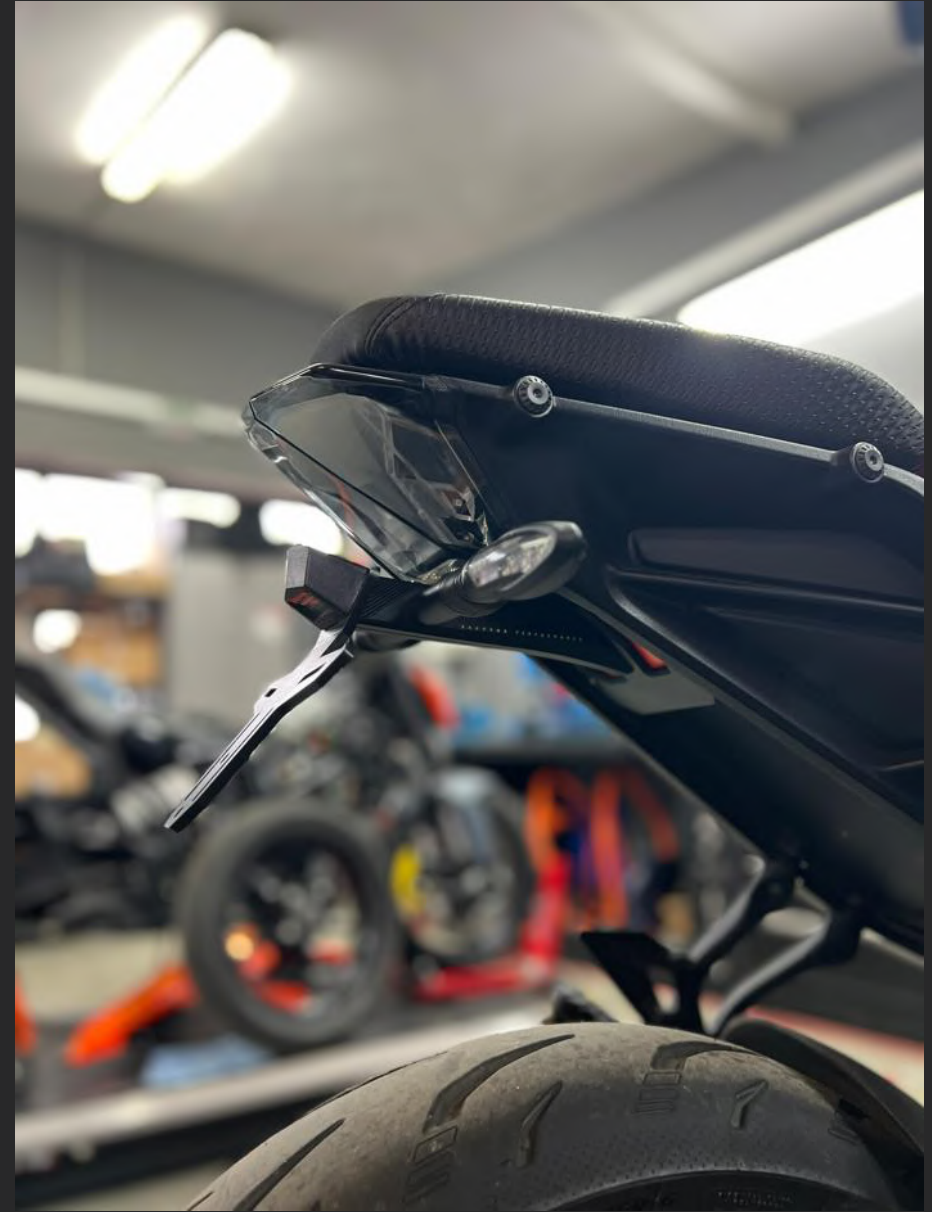
Congratulations on completing the installation!

We hope this guide has made the process smooth and straightforward for you.

Remember, safety always comes first on the road.

Double-check your work, ensure everything is securely fastened, and enjoy your ride with peace of mind.

Ride safely and enjoy the journey ahead!





IMPORTANT

It is recommended that periodic inspections are made to ensure that all bolts are tightened to the specified torque settings. Should the bike be involved in an accident, a thorough inspection should be made, and any components that have taken an impact, no matter how small, should be replaced.

The manufacturer or supplier cannot be held responsible for products that are incorrectly mounted or inappropriately used.

It is recommended to check all connections regularly for tightness of fit.



<https://bagorosperformance.com/product/tail-tidy-duke-125-390-2024/>

